

### Private Deluxe Tour (Deluxe Van: 1 – 14 Persons)



Enjoy Oahu with a private tour just for your group! Select from the most popular tours from the historical Arizona Memorial to Haleiwa town on the North Shore. Experience the difference of unparalleled comfort aboard our Private Deluxe Tour Van with **\*Door-to-Door Service, original video, mint & hand towelette service.** Plus, our award-winning Driver Guide with Aloha makes your private tour a memorable experience for your entire group!

TOUR / HOURS	PRICE	ADD-ON TICKET	ENHANCEMENTS	SCHEDULE / ROUTE	ADDITIONAL NOTES
 <b>USS Missouri, Arizona Memorial &amp; City</b> 7½ hours: 8:00AM – 3:30PM	\$1,305.44 per van Includes: Parking fee at Pearl Harbor National Memorial and USS Missouri	<ul style="list-style-type: none"> <li>Reserved Arizona Memorial ticket handling fee: \$10.00 per person</li> <li>USS Missouri ticket: \$36.64 per adult, \$18.31 per child</li> </ul>	Shell Lei by Driver: \$10.00 per person. A great start to your Hawaiian vacation! Cold Bottled Hawaiian Water: \$3.50 per bottle. Our most requested enhancement.	8:00AM Pickup at your hotel in Waikiki 8:40AM Arizona Memorial (120 minutes) 11:00AM USS Missouri (150 minutes) 2:00PM Punchbowl National Cemetery (window view) 2:25PM King Kamehameha Statue (10 minutes), Downtown Honolulu (window view) 3:30PM Return to your hotel in Waikiki	Our Private Deluxe Tour allows you flexibility. If you want to add more time to see more attractions, add \$38.25 per 15 minutes. Based on availability.
 <b>Arizona Memorial &amp; City</b> 4½ hours: 8:00AM – 12:30PM	\$846.46 per van Includes: Parking fee at Pearl Harbor National Memorial	<ul style="list-style-type: none"> <li>Reserved Arizona Memorial ticket handling fee: \$10.00 per person</li> </ul>		8:00AM Pickup at your hotel in Waikiki 8:40AM Arizona Memorial (120 minutes) 11:15AM Punchbowl National Cemetery (window view) 11:40AM King Kamehameha Statue (10 minutes), Downtown Honolulu (window view) 12:30PM Return to your hotel in Waikiki	
 <b>Arizona Memorial &amp; Haleiwa Mini Circle Island</b> 7½ hours: 8:00AM – 3:30PM	\$1,305.44 per van Includes: Parking fee at Pearl Harbor National Memorial	<ul style="list-style-type: none"> <li>Reserved Arizona Memorial ticket handling fee: \$10.00 per person</li> </ul>		8:00AM Pickup at your hotel in Waikiki 8:40AM Arizona Memorial (120 minutes) 11:10AM Dole Plantation (30 minutes) 12:00PM Haleiwa (90 minutes) 2:15PM Punchbowl National Cemetery (window view) 2:40PM King Kamehameha Statue (10 minutes), Downtown Honolulu (window view) 3:30PM Return to your hotel in Waikiki	
 <b>Scenic East Coast</b> 4 hours: 8:00AM – 12:00PM	\$796.37 per van Includes: Parking fee at Nuuanu Pali	<ul style="list-style-type: none"> <li>N/A</li> </ul>		8:00AM Pickup at your hotel in Waikiki 8:50AM Hanauma Bay (window view), Halona Blow Hole (10 minutes) 10:10AM Nuuanu Pali (10 minutes) 11:05AM King Kamehameha Statue (10 minutes), Downtown Honolulu (window view) 12:00PM Return to your hotel in Waikiki	

#### GENERAL INFORMATION

**Price:** Is per van except otherwise stated. Price includes driver guide fee, tax, gratuity and parking fee. Reserved tickets and enhancements are per person and are added to the van price. Prices and contents subject to change. Additional usage fee applies for some hotels.

**Schedule & Routes:** Subject to change due to traffic and conditions beyond our control.

**Arizona Tickets:** May be arranged on your own at [recreation.gov](http://recreation.gov).

**Vehicle:** Deluxe Van with **original video, mint & hand towelette service.** **\*Door-to-Door Service:** Pickup and return to your hotel OR approved pickup location near your hotel.

**Private Deluxe Tours:** Closed on New Year's Day (1/1), Thanksgiving Day (11/24), Honolulu Marathon (12/11) and Christmas Day (12/25). Arizona Tours also closed on Pearl Harbor Remembrance Day (12/7).

**Attire:** Please dress casually and wear comfortable shoes for light walking. We also recommend you bring sunglasses and a camera.

**Reservations & Cancellation Policy:** For reservations and information, call toll free at 1-800-334-6191, 808-983-STAR (7827) in Hawaii or visit our website at [StarofHonolulu.com](http://StarofHonolulu.com). You may also fax to 808-983-7780 or email [info@starofhonolulu.com](mailto:info@starofhonolulu.com). All deposits are non-refundable. Upon confirmation, 10% deposit required. 40% due 15 days prior, and remaining balance of 50% due 72 hours prior.



8:00AM Pickup at your hotel in Waikiki  
4 popular routes to choose from

12:00 – 3:30PM Return to your hotel in Waikiki

# DAILY DELUXE TOUR

## Private Deluxe Tour

(Deluxe Van: 1 – 14 Persons)

Option to book reserved tickets when applicable and available.

2022  
RST4-1'

### Enjoy the Island Your Way!

Unparalleled comfort aboard our Private Deluxe Tour Van with [\\*Door-to-Door Service](#), [original video](#), [mint & hand towelette service](#) and our exceptional Royal Star® driver guide.



Pickup at your hotel in Waikiki



NEW Stand-up Style Van



Mint and Hand Towelette Service



Original Video



In-Depth Driver Narration

### Additional Notes

[\\*Door-to-Door Service](#): Pickup and return to your hotel in Waikiki OR approved pickup location near your hotel.

[Attire](#): Please dress casually and wear comfortable shoes for light walking. We also recommend you bring sunglasses and a camera.

[Arizona Memorial Security Measures](#): Bags are not allowed at the Arizona Memorial but storage facilities are available at the Visitor Center for a nominal fee.

[Reserved Arizona Memorial Ticket Handling Fee](#): Additional \$10.00 per person. Based on availability. OR, Arizona tickets may be arranged on your own at [recreation.gov](http://recreation.gov).

[USS Missouri Ticket](#): \$36.64 per adult, \$18.31 per child will be added for the USS Missouri, Arizona Memorial & City Tour.

[Price & Contents](#): Subject to change due to fees and admission costs.

[Schedule & Routes](#): Subject to change due to traffic and conditions beyond our control.

### Oahu's Famous Instagram Spots



Arizona Memorial



USS Missouri



Punchbowl National Cemetery



King Kamehameha Statue



Iolani Palace



Hanauma Bay



Halona Blow Hole



Nuuanu Pali



Byodo-In Temple



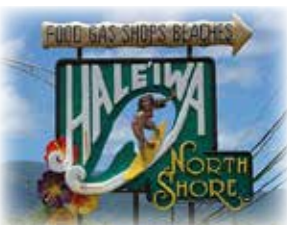
Tropical Farms



Chinaman's Hat



North Shore Beaches



Haleiwa



Waialua Coffee / Soap Factory



Dole Plantation