




# Artists To-Go® @ Your Place



Talented Artists Elevates Your Party!  
Off-Site, Daily  
Suggested Retail price: See below



ARTISTS TO-GO®	SUGGESTED RETAIL PRICE	CONTENTS	REQUIREMENTS / NOTES
 <b>Artists-To-Go®</b> Feature Performance	Option 1: \$1,500.00 per artist	<ul style="list-style-type: none"> <li>Select resident artist: Elvis, Michael Jackson or Hawaii artist</li> <li>Pre-show meeting and coordination</li> <li>Artist and 1 production manager</li> <li>20-minute live performance (before 7:00PM in Waikiki)</li> <li>10-minute Meet&amp;Greet® after show</li> <li>Customized tracks, choreography and costumes</li> </ul>	Please see Event contract for specific conditions for stage, sound and lighting equipment, artist needs, etc. See Track Show Rider.
<b>Artists &amp; Dancers</b> Feature Performance	Option 2: \$3,300.00 per 1 artist & 4 dancers	<ul style="list-style-type: none"> <li>Select resident artist: Elvis, Michael Jackson or Hawaii artist</li> <li>Pre-show meeting and coordination</li> <li>Artist, 4 hula dancers and 1 production manager</li> <li>20-minute live performance (before 7:00PM or 10:00PM in Waikiki)</li> <li>10-minute Meet&amp;Greet® after show</li> <li>Customized tracks, choreography and costumes</li> </ul>	
<b>Artists from Vegas</b> Feature Performance	Option 3: \$4,000.00 per artist, plus expenses	<ul style="list-style-type: none"> <li>Choose any artist from Las Vegas</li> <li>Pre-show meeting and coordination</li> <li>Artist and 1 production manager</li> <li>20-minute live performance</li> <li>10-minute Meet&amp;Greet® after show</li> <li>Customized tracks, choreography and costumes</li> <li>See below for expenses</li> </ul>	
<b>Paradise To-Go®</b> <b>Entertainment</b> <b>@ Your Place</b>	Ask	<ul style="list-style-type: none"> <li>Refer to PG-EE for more selections for Hawaii @ Your Place.</li> </ul>	

### ADDITIONAL NOTES

**Price:** Is per artist or set, including 4.712% excise tax. Prices, contents and line-up of artists subject to change.

**Track Show Rider:** Ask for "Track Show Rider" contract for details and client's responsibilities.

**Cast Line-up:** See the current line-up at [RockAHulaHawaii.com/cast](http://RockAHulaHawaii.com/cast) and full bios at [LegendsinConcert.com/performers](http://LegendsinConcert.com/performers).

**Contact:** For Hawaii events (Oahu, Maui, Big Island, Kauai, Lanai), contact Event Sales at 808-983-7884 or email [events@rockahulahawaii.com](mailto:events@rockahulahawaii.com). For outside Hawaii (continental US and other countries), call 702-253-1333 or email [infocorporate@legendsinconcert.com](mailto:infocorporate@legendsinconcert.com).

**Expenses:** Charterer is responsible for all traveling expenses including airfare, hotel accommodations, meals, transport of equipment and personnel, insurance, etc. A legal contract will be written for each event.

**Confirmation / Payment / Cancellation Terms (for Oahu):** Events require non-refundable deposits based on total charge: 10% upon confirmation, 40% deposit 30 days prior and balance of 50% 72 hours prior. For Artists from Vegas: 10% upon confirmation, 40% deposit 90 days prior and balance of 50% 72 hours prior.

**Force Majeure:** Rock-A-Hula® shall not be liable for any delays or failure in performance or interruption of its services resulting directly or indirectly from any cause or circumstance beyond its reasonable control, including but not limited to, Acts of God and of war, strikes, adverse weather which curtails show operations, labor disputes, postal delays, explosions, governmental order, regulations, failure of machinery, or other unexpected events prohibiting services. In no event shall Rock-A-Hula® be liable to Booking Party for the loss of profit or for other similar or dissimilar collateral or consequential damages whether based on breach of contract warranty, or otherwise, exceeding the actual amount of consideration paid by the Booking Party.



## ROCK-A-HULA® ARTISTS

World's Greatest Tribute Artists

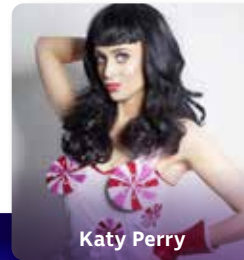
Spice up your event with Rock-A-Hula Entertainment. You now have access to the best tribute artists in the industry from Las Vegas, who not only look and sound like the star they portray, but are true performers in their own right. Artists sing their greatest hits with their own natural voices, as well as dance and play instruments, accompanied by a rockin' live band and fabulous dancers. See the current line-up at [RockAHulaHawaii.com/Cast](http://RockAHulaHawaii.com/Cast) or ask us for details. For the latest news, "like" us on Facebook ([facebook.com/RockAHulaHI](https://facebook.com/RockAHulaHI)) and follow us on Twitter (@RockAHulaHI).



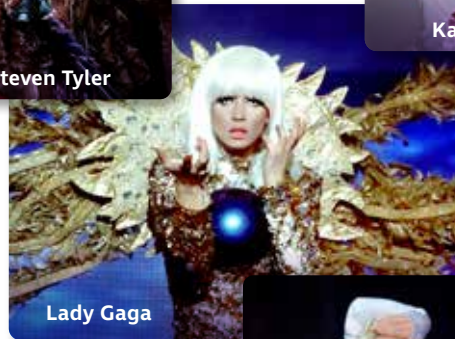
Elvis Presley



Steven Tyler



Katy Perry



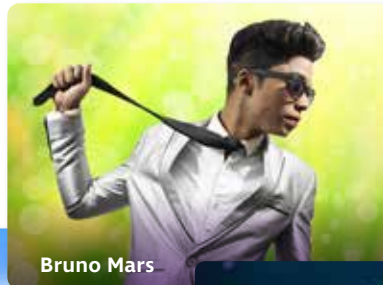
Lady Gaga



Michael Jackson



Britney Spears



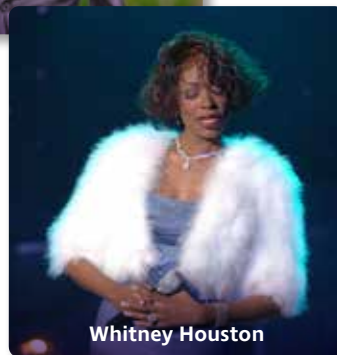
Bruno Mars



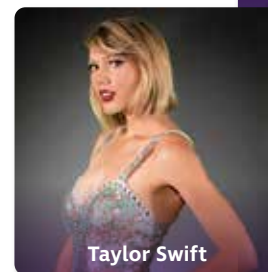
Madonna



Michael Jackson



Whitney Houston



Taylor Swift



Celine Dion

### ADDITIONAL NOTES

In Circumstances Beyond Our Control: We reserve the right to change the schedule and other performers may be substituted.  
Force Majeure: Rock-A-Hula® shall not be liable for any delays or failure in performance or interruption of its services resulting directly or indirectly from any cause or circumstance beyond its reasonable control, including but not limited to, Acts of God and of war, strikes, adverse weather which curtails show operations, labor disputes, postal delays, explosions, governmental order, regulations, failure of machinery, or other unexpected events prohibiting services. In no event shall Rock-A-Hula® be liable to Booking Party for the loss of profit or for other similar or dissimilar collateral or consequential damages whether based on breach of contract warranty, or otherwise, exceeding the actual amount of consideration paid by the Booking Party.

