

FEATURING FALL

AT FIVE STAR®

October 1, 2018 - January 5, 2019

Ask for
Friday Fireworks!



Roasted Butternut Squash Bisque
with Crème Fraîche and Chives



Gorgonzola-Stuffed Poached Pears and Mixed Green Salad
Haricot Vert, Baby Carrots and Walnuts with Peach Cider Vinaigrette



Lime Basil Sorbetto



Air-Flown Live Butter Poached Maine Lobster
Paddlefish Caviar, Spaghetti Squash and Daikon with Brandy Américaine Sauce



Roasted USDA Prime Tenderloin of Beef
Seared with Black Truffle and Garlic
Wild Mushroom Ragout and Duchess Red Bliss Potato with Port Wine Demi Glace



Cinnamon Apple Cheesecake Galette and Pumpkin Spiced Gelato



Fall Canapés

Black Mission Fig Jam Tartlet with Goat Cheese and Bacon

Manzanilla Olive and Pimento Tapenade with Naan

Crispy Pork Belly with Curry Mango Marmalade and Grape Tomato

Includes 3 Super Premium Beverages of Your Choice and a Hawaiian Bellini!

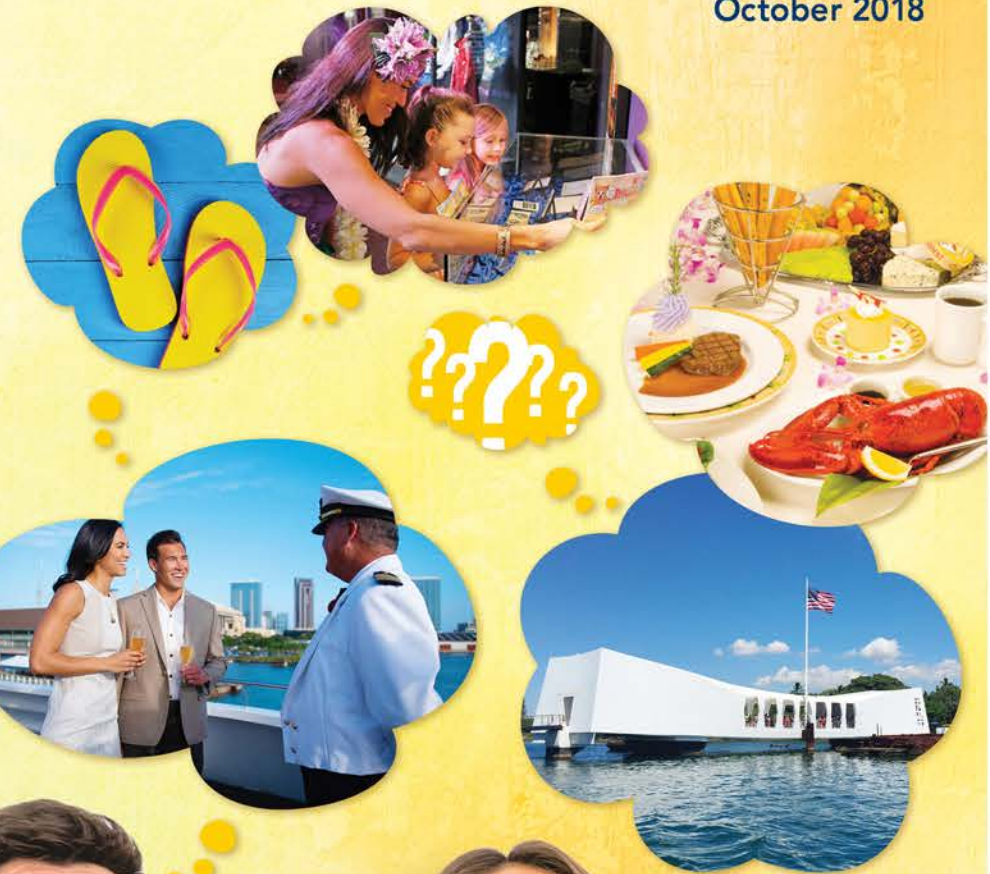
Alternative Entrées available with 24 hours notice



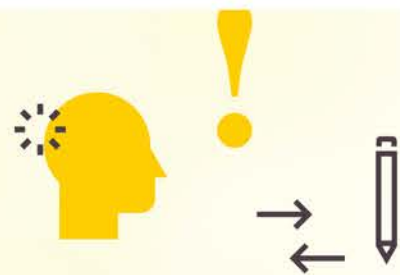
The Star of Honolulu Bulletin

FOR TRAVEL PARTNERS
October 2018

FREQUENTLY ASKED QUESTIONS



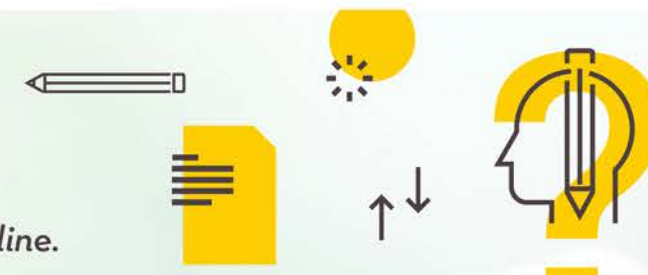
FEATURING FALL
AT FIVE STAR®



FREQUENTLY ASKED QUESTIONS

GUESTS AND TOUR AGENTS ASKED US

We have compiled the most asked questions below to help you. Plus, you and your guests can access the FAQ online.



SUNSET DINNER CRUISES

Daily
Aloha Tower Market Place Pier 8

1. What is the dress code?

- **Five Star®:** No shorts, T-shirts or slippers/flip flops. Out of respect for other guests, dress code is strictly enforced.
- **Three Star®, Star® and Pacific Star®:** We recommend resort casual with long pants.

2. Which cruise do you recommend for anniversary dinner?

We have 4 selections; from the most romantic and luxurious **Five Star®** to the fun and casual **Pacific Star® Buffet**. We also have a selection of **enhancements**, such as cakes & wines. Ask our reservations for recommendation.



3. Do you accommodate private parties?

Yes! The **Star of Honolulu®** has beautiful private lounges and banquet rooms perfect for private parties from 20 to 1,000 guests. Contact our Events Department at (808) 983-7884. We also have a "Captain's Wedding" that can be added to the party.



4. What is the cruise route?

The **Star of Honolulu®** cruises along the waters off Waikiki toward Diamond Head.

Visit StarofHonolulu.com/frequently-asked-questions/ for more FAQs



DINNER & SHOW

Daily except Friday
Royal Hawaiian Center, Bldg. B 4th Floor

1. Are you open every day?

Rock-A-Hula® is open six days a week. The show is dark on Fridays. In addition, the show is closed on Friday, 12/7/18 – Sunday, 12/9/18.

2. What is the theme of your show?

Brand new show "Hawaiian Journey®" from 1920s to current through music and dance that appeal to all ages. Enjoy a melody of hula dances, ukulele and various artist performances with historical footage from the 1920s Boat Days and 1970s surfing music to current popular Hawaiian songs. Plus, a powerful fire knife performance!



3. Is the show appropriate for children?

Yes! Children will be mesmerized by their favorite songs from movies and fun Hawaiian show. Plus, we have "Treasure Hunt" for kids (available on dinner packages only).



4. May I take pictures and video during the show?

Yes, but we prohibit the use of any flash photography and video recording devices during the show. We also ask that you turn off or silence your cell phones. Our post-show "Meet&Greet®" gives you the opportunity to take photos and get autographs from our cast members.

Visit RockAHulaHawaii.com/frequently-asked-questions for more FAQs



WHALE WATCH CRUISES

1/2/19 – 4/5/19
Aloha Tower Market Place Pier 8

1. What is your Whale Guarantee?

You'll receive a free return **Whale Check** until a whale is sighted (meal and transportation optional).



2. What is the dress code?

Casual attire and shorts are fine.

3. What if I am prone to motion sickness?

Onboard, ask for complimentary 100% herbal ginger capsules to help settle your stomach. Take these at your own discretion. Don't hesitate to ask any crew member for assistance.

4. What is your Child FREE offer?

1 child (age 3-11) cruise only FREE per paid adult (meal and transportation optional).

5. What is the cruise route?

When we're looking for whales, the **Star of Honolulu®** is stabilized and certificated to go beyond Diamond Head to view the beautiful Kahala Gold Coast. The captain may alter the route or cancel the cruise depending on weather conditions.



Visit StarofHonolulu.com/frequently-asked-questions for more FAQs



DOLPHIN WATCH & SNORKEL CRUISE

Daily
Wai'anae Boat Harbor

1. What if I don't see any dolphins?

You'll receive a "Dolphin Check" to cruise again (meal, transportation and snorkel optional)!



2. Are there any age restrictions for this cruise?

There is no age restriction for the **Dolphin Star®**. Guests of all ages in good health and physical condition are welcome. Minors under the age of 18 must be accompanied by a parent or legal guardian.

3. What should I wear and bring for dolphin watching and snorkel?

We recommend that you wear your bathing suit and bring your own towel and sunscreen. We have two **onboard restrooms**, plus a **fresh water shower**. All snorkeling equipment is provided.



4. Why can't we swim with dolphins?

Swimming with dolphins is prohibited, but you will be thrilled to see them play in their natural habitat. We comply with all government guidelines for protection of marine mammals since our debut of our **Wild Dolphin Watch®** cruise in 2007.

Visit Dolphin-Star.com/preparing-for-your-adventure for more FAQs



ARIZONA/MISSOURI DELUXE TOUR

Daily

1. What is the recommended attire?

- We recommend comfortable walking shoes and casual attire for light walking.
- We also recommend sunglasses and a camera.



2. May I leave my bag in the vehicle?

- No, our driver will leave the vehicle unattended to escort and guide you to the visitor center for the Arizona and USS Missouri memorials.
- The Arizona and USS Missouri memorial security measures apply for this tour; bags are not allowed. Storage facilities are available at the visitor center for a small fee.

3. Can I join the Arizona tour if I have to be back in Waikiki by 1:00PM for another tour?

Yes most days, except on unusual days when the Arizona memorial and/or traffic is congested, unavoidably delaying your return. Note: Arizona / Missouri Combo is scheduled 8:00AM – 4:00PM.

4. Can wheelchair guests go on this tour?

- Certainly!
- You will be assigned to our specially trained driver. A minimum of 24 hours notice prior to tour is required. At the USS Missouri, only the main deck is accessible.
 - Maximum wheelchair size: 30" wide by 48" long. Total weight: Weight of guest and wheelchair must total less than 500 lbs.
 - Acceptable types: Most regular wheelchairs and electric wheelchairs with "joystick" are acceptable as long as they meet the above requirements. We regret we are not able to accept larger wheelchairs, scooters, or guests and wheelchairs that exceed 500 lbs. total.

Visit RoyalStarHawaii.com/frequently-asked-questions for more FAQs



CRUISES, SHOWS & TOURS

1. What is your payment and cancellation policy?

For daily cruises, show and tours, confirmation requires 100% payment. Full cancellation charge within 24 hours. For group of 10 persons or more, please ask.

2. What are your credentials?

All of our tours have received TripAdvisor's "Certificate of Excellence" award for 4 years in a row from 2015 to 2018!



3. Do you have special diet information and alternative menus?

Yes! **All menu options** have a choice of alternative entrées. (not available on Early Bird Whale Watch®). For special diet information on all daily menus, please visit StarofHonolulu.com, RockAHulaHawaii.com and Dolphin-Star.com.



4. What is your accessibility of the venues?

The **Star of Honolulu®** and **Rock-A-Hula®** are A.D.A. (Americans with Disabilities Act) accessible. The **STAR** is the only ship equipped with boarding ramps and elevator access to accommodate all wheelchairs and scooters.

- **Dolphin Star®** is not A.D.A accessible due to inherent design limitations.
- **Rock-A-Hula® Green Room®** package has limited access to the "Be on Stage" portion of the backstage tour.
- "City Lights" Enhancement is not able to accommodate wheelchairs due to the nature of the site location and equipment used.